



Agenda
Parks & Recreation Commission Special Meeting
Thursday, March 19, 2026
Richland City Hall ~ Council Chambers
625 Swift Boulevard

Special Meeting - 6:00 p.m.

Welcome

Pledge of Allegiance

Call to Order/Attendance

Approval of Agenda (Approved by Motion)

1. Approval of the March 19, 2026 Parks and Recreation Commission Special Meeting Agenda

Presentations

Approval of Minutes (Approved by Motion)

2. Approval of the February 12, 2026 Parks & Recreation Commission Meeting Minutes and the February 26, 2026 Parks & Recreation Commission Workshop Meeting Minutes

New Business

3. 2026 Park Partnership Program Applications
- Chris Waite, Parks & Public Facilities Director

Unfinished Business

Council Liaison Report

Recreation Report

Parks & Public Facilities Report

Commission Comments

Adjournment

This meeting will be broadcast live on [CityView Channel 192](#) on the City's website.

Richland City Hall is ADA accessible. Requests for sign interpreters, audio equipment, and/or other special services must be received 48 hours prior to the meeting by calling the City Clerk's Office at 509-942-7389.



PARKS AND RECREATION COMMISSION AGENDA ITEM COVERSHEET

Meeting Date: 3/19/2026

Agenda Category: Approval of Minutes

Prepared By: Patty Roe, Administrative Assistant II

Subject

Approval of the February 12, 2026 Parks & Recreation Commission Meeting Minutes and the February 26, 2026 Parks & Recreation Commission Workshop Meeting Minutes

Department

Parks & Public Facilities

Recommended Motion

Motion to approve the minutes for the February 12, 2026, Parks and Recreation Commission Meeting and February 26, 2026, Workshop.

Summary

Fiscal Impact

Attachments

1. DRAFT 2026.02.12 Parks and Recreation Commission Meeting Minutes
2. DRAFT 2026.02.26 Parks and Recreation Commission Workshop Minutes



Parks & Recreation Commission Regular Meeting - 6:00 p.m.

Welcome

Pledge of Allegiance

Attendance:

Chair Gutierrez	Absent
Vice Chair Hodges	Present
Commissioner Buelt	Present
Commissioner Thompson	Present
Commissioner Mason	Present
Commissioner Jones	Present
Commissioner Watrous	Present
Commissioner Thallapally	Present
Commissioner Kreis	Present

Also present were the Council Liaison Holten, Liaison/Parks and Public Facilities Director Waite, Parks and Public Facilities Project Manager Wieber, and Administrative Assistant II Roe.

Approval of Agenda: (Approved by Motion)

1. Approval of the February 12, 2026 Parks and Recreation Commission Meeting Agenda.

COMMISSIONER JONES MOVED AND COMMISSIONER KRIES SECONDED THE MOTION TO APPROVE THE FEBRUARY 12, 2026, PARKS AND RECREATION COMMISSION MEETING AGENDA. MOTION CARRIED 8-0.

Presentations:

2. Purple Sage Riders Park Partnership Grant Report

Dawn Kammernzind presented a summary of the 2024 Park Partnership between the City of Richland and the Purple Sage Riders, a chapter of the Washington State Back Country Horsemen, which resulted in several improvements to equestrian facilities through volunteer labor and donated resources. Projects completed included installation of a 50–60 foot round pen constructed with Noble panels set in concrete, construction of a ladder box obstacle using pressure-treated lumber anchored with

rebar, creation of a stair-step obstacle built from railroad ties on a natural slope, installation of two 12-foot swing-arm gates at the Colyak Bow Hunters parking lot, and placement of four new signs to guide park users. The volunteer group contributed labor and materials, demonstrating strong community partnership and support for equestrian recreation and trail use within the park system.

3. 2026 Park Partnership Grant Program

Director Waite provided an overview of the City of Richland's Park Partnership Program, which offers matching grants to community groups for enhancing city parks, trails, open spaces, and recreational facilities. It highlights the program's goals, eligibility requirements, and the application timeline, while encouraging participation in the 2026 funding cycle.

Waite explained that projects must provide year-round public benefits, be self-contained, and require no City labor, materials, or ongoing maintenance. Applications are due by March 2, 2026, and require a mandatory pre-application meeting and a presentation to the Parks & Recreation Commission. Projects must be completed within one year of the contract.

And for 2026, the Park Partnership Program will have two grant windows—January–March and September–November—with flexible funding allocation based on project merit, readiness, and available funds. Starting in 2027, the program will shift to a single grant window in the fall.

Public Comments:

None.

Approval of Minutes: (Approved by Motion)

4. Approve the Minutes of the Parks and Recreation Commission Meeting and Workshop held on January 8, 2026, and January 22, 2026.

COMMISSIONER THOMPSON MOVED, AND COMMISSIONER MASON SECONDED THE MOTION TO APPROVE THE JANUARY 8, 2026, AND JANUARY 22, 2026, PARKS AND RECREATION COMMISSION MEETING AND WORKSHOP MINUTES. MOTION CARRIED 8-0.

New Business:

5. Little Badger Trail Recreation and Conservation Office Grant Application

Staff and representative David Comstock from Friends of Badger Mountain presented a proposed grant application to the Washington State Recreation and Conservation Office for improvements to the Little Badger Mountain Trail system. The project aimed to advance trail development in line with the Trail Master Plan, enhance safe public access, and support conservation goals. The Commission's recommendation was requested before the City Council's review and authorization to submit the grant.

COMMISSIONER THOMPSON MOVED AND COMMISSIONER BUELT SECONDED THE MOTION TO RECOMMEND THAT CITY COUNCIL APPROVE SUBMISSION OF THE LITTLE BADGER TRAIL RECREATION AND CONSERVATION OFFICE GRANT APPLICATION. MOTION CARRIED 8-0.

6. Parks and Recreation Commission 2026 Goals

The Parks and Recreation Commission reviewed and finalized the Calendar Year 2026 goals. These goals, refined through prior discussion with staff at the January 22 workshop, provide direction for Commission activities, policy recommendations, and engagement efforts, supporting the City's Strategic Plan and priorities for community safety, mobility, natural resource protection, fiscal responsibility, and recreational opportunities. Revision to P&RC GOAL 1, OBJECTIVE 2:

Each commissioner will attend a *minimum of four (4) parks* and recreation-related events in a year to increase opportunities for community engagement, expand perspective, and provide context for the work of PRC.

COMMISSIONER MASON MOVED AND COMMISSIONER KREIS SECONDED THE MOTION TO ADOPT THE 2026 PARKS AND RECREATION COMMISSION GOALS AS REVISED. MOTION APPROVED 8-0.

Council Liaison Report:

Council Liaison Holten introduced herself as the new Council Liaison to the Parks and Recreation Commission.

Recreation Report:

Director Waite provided an update on current Recreation programs and upcoming activities. Youth Volleyball is returning for grades 5–8, with practices twice weekly and Saturday games at Enterprise Middle School, along with a 3rd/4th-grade “Minis” developmental program. Youth Basketball is halfway through the season, with 656 participants on 59 teams in grades 1–6. Team Picture Day was successfully held, and the staff continues to ensure smooth operations.

Seasonal staffing is supporting programs, including 38 trained basketball officials. Aquatics Lifeguard positions for the 2026 pool season have been posted, and preparations are underway for another strong summer at George Prout Pool.

Sports field rentals open March 1, and 25 softball tournaments are already scheduled for the 2026 season. Recent events include the Special Olympics Polar Plunge on February 7. Staff is actively preparing for Bunny Brunch on March 28, 2026, at the Richland Community Center and Howard Amon Park, one of the City's signature spring events.

The Recreation Team welcomed Michelle Haffner as the new Recreation Coordinator on February 9, who will lead major City events. STAR Award nominations through the Richland Arts Commission remain open through February 26.

Parks & Public Facilities Report:

Project Manager Donald Wieber introduced himself as the new project manager for Parks and Public Facilities.

Director Waite provided updates on several Parks and Public Facilities projects. The Bateman Island causeway removal project is near completion, with a celebration planned at the end of April to coincide with the salmon run. He emphasized the importance of removing the causeway. Additional updates included the Columbia Point Golf Course lease, Leslie Groves tennis courts, the land exchange at South Badger Mountain, and improvements to the Columbia Point Marina viewing platform, which is near completion. Updates were also shared on the Columbia Playfield parking lot and other ongoing facilities projects.

Adjournment

The meeting was adjourned at 7:43 PM

APPROVED:

Maria Gutierrez, Parks & Recreation Commission Chair

PREPARED BY:

Patty Roe, Administrative Assistant II



MINUTES

Parks and Recreation Commission Workshop
Wednesday, February 26, 2026
Richland Community Center – Meeting Room
500 Amon Park Drive

Parks and Recreation Commission Workshop - 6:00 p.m.

Welcome and Attendance

Chair Gutierrez welcomed those in the audience and expressed appreciation for their attendance.

Attendance: Chair Gutierrez	Present
Vice Chair Hodges	Present
Commissioner Buelt	Present
Commissioner Jones	Present
Commissioner Watrous	Present
Commissioner Thompson	Absent
Commissioner Mason	Absent
Commissioner Thallapally	Absent
Commissioner Kries	Absent

Also present were Council Liaison Holten, Parks & Public Facilities Director Waite, and Administrative Assistant II Roe.

Discussion Items

1. Trail Safety Initiative

Director Waite discussed trail safety with the commission as part of the Commission's 2026 Goals. The discussion focused on reviewing safety considerations for parks and trails, identifying areas of concern, and exploring ways to enhance user-friendliness while promoting safe, responsible trail use.

Discussion only.

2. 2026 Parks and Recreation Commission Retreat

The Parks and Recreation Commission discussed the proposal to hold a 2026 Commission Retreat in place of the traditional annual Park Tour. Commissioners expressed interest in a retreat format to allow more in-depth discussion on long-term priorities, strategic planning, and Commission goals, while also providing opportunities for team building and collaboration with staff. The discussion focused on potential format, timing, topics, and desired outcomes for the retreat. Retreat to be discussed at another

workshop.

Discussion only.

3. Parks, Recreation, & Open Space (PROS) Comprehensive Plan Update

Director Waite led a discussion with the Parks and Recreation Commission regarding an upcoming agenda item for the Parks, Recreation, & Open Space (PROS) Comprehensive Plan. He reviewed what is anticipated to be presented at the business meeting and discussed the proposed recommendation. The workshop provided an opportunity for staff and the Commission to discuss and clarify key points prior to formal consideration.

Discussion only.

Adjournment

Chair Gutierrez adjourned the workshop at 7:00 PM

APPROVED:

Maria Gutierrez, Commission Chair

PREPARED BY:

Patty Roe, Administrative Assistant II



PARKS AND RECREATION COMMISSION AGENDA ITEM COVERSHEET

Meeting Date: 3/19/2026

Agenda Category: New Business

Prepared By: Chris Waite, Parks & Public Facilities Director

Subject

2026 Park Partnership Program Applications

Department

Parks & Public Facilities

Recommended Motion

Motion to recommend that the Richland City Council approve the funding for the Parks Partnership Program applications from Evergreen Mountain Bike Alliance and Tapteal Greenway in the amount of \$4,600.

Summary

A total of four (4) applications were submitted for the 2026 Park Partnership Program. This program provides matching fund grants to eligible applicants for projects that enhance City-owned parks, trails, open space, and recreation facilities. Following staff review, two applications were determined to meet program requirements and are eligible for consideration. One application did not meet a required program submission requirement and was therefore not eligible for further review. A second application was determined to be ineligible under the program guidelines. The 2026 Park Partnership Program is currently budgeted at \$40,000.

The applications received are summarized below. **Staff's detailed evaluation of the applications and recommended conditions associated with the grants are provided in the attached staff memorandum and are incorporated into staff's recommendation.**

Evergreen Mountain Bike Alliance – Columbia Basin Chapter

Project: Badger Mountain Community Park Bike Park Design

Requested Funding: \$3,000

Total Project Cost: \$9,288.75

Evergreen Mountain Bike Alliance proposes to complete preliminary and final design work for a family friendly bike park within the open space area along the eastern boundary of Badger Mountain Community Park.

Tapteal Greenway

Project: Amon Creek Natural Preserve Habitat Restoration

Requested Funding: \$1,600

Total Project Cost: \$6,364

Tapteal Greenway proposes a habitat restoration project at the Amon Creek Natural Preserve focused on removing unauthorized berm and jump structures and restoring disturbed areas with native plants.

Tri-City R/C Modelers

Project: Irrigation System Component Repairs

Requested Funding: \$8,000

Total Project Cost: \$23,185.06

Tri-City R/C Modelers submitted an application to repair and upgrade several components of their irrigation system.

Staff recommends funding the Evergreen Mountain Bike Alliance and Tapteal Greenway applications for a total Park Partnership Program allocation of **\$4,600**. Staff does not recommend funding the Tri-City R/C Modelers application because the project does not meet program guidelines requiring that projects provide benefit to the general public. Staff is working with the organization separately to address the irrigation system issues outside of the Park Partnership Program.

Fiscal Impact

The 2026 Park Partnership Program is budgeted at \$40,000, and the recommended funding for the 2026 applications totals \$4,600.

Attachments

1. 2026 Park Partnership Staff Memo
2. 2026 Park Partnership Application Guidelines
3. PP2026 Tapteal Greenway
4. PP2026 Evergreen
5. PP2026 TCRCM

CITY OF RICHLAND
PARKS & PUBLIC FACILITIES

625 Swift Boulevard, MS-13
Richland, WA 99352
(509) 942-7390



MEMORANDUM

TO: Parks and Recreation Commission
FROM: Chris Waite, Parks and Public Facilities Director
DATE: March 15, 2026
SUBJECT: 2026 Park Partnership Program Application Review

OVERVIEW:

Staff reviewed all submitted applications for completeness and eligibility under the Park Partnership Program guidelines. Conditions and considerations for each application are outlined below.

APPLICATION REVIEW:

Evergreen Mountain Bike Alliance – Columbia Basin Chapter

Project: Badger Mountain Community Park Bike Park Design

Requested City Funding: \$3,000

Total Project Cost: \$9,288.75

Evergreen Mountain Bike Alliance proposes to complete preliminary and final design work for a family friendly mountain bike park within the open space area along the eastern boundary of Badger Mountain Community Park. The work includes site analysis, public engagement, concept development, and preparation of final design documents and cost estimates.

Approval of this application would support a planning and design effort only and does not constitute approval or commitment to construct the proposed bike park. The planning process will allow the City and the applicant to evaluate feasibility, community support, and consistency with the park master plan.

If approved, the following conditions will be incorporated into the project agreement:

1. The conceptual layout must be scaled to fit within the footprint identified in the Badger Mountain Community Park master plan.
2. Because the proposed location is designated as open space, improvements will be limited to trail based features. A pump track or similar constructed facility

would require a park master plan amendment and is not included within the scope of this grant.

3. The project timeline may be amended as needed to allow for multiple phases of community engagement based on revisions to the concept.
4. The applicant will coordinate regularly with Parks and Public Facilities staff during the design process.
5. The planning process must include evaluation of alternative locations if community engagement does not support the proposed location at Badger Mountain Community Park.

Tapteal Greenway

Project: Amon Creek Natural Preserve Habitat Restoration

Requested City Funding: \$1,600

Total Project Cost: \$6,364

Tapteal Greenway proposes a habitat restoration project within the Amon Creek Natural Preserve focused on removing unauthorized berm and jump structures and restoring disturbed areas with native vegetation. The project includes volunteer labor for removal of informal trail features, planting of native vegetation, and installation of protective materials to support successful plant establishment.

Staff finds that the proposed project supports preservation and stewardship of natural areas within the park system and is consistent with the intended purpose of the Park Partnership Program.

If approved, the following conditions will be incorporated into the project agreement:

1. A pre-project meeting with Parks and Public Facilities staff must occur at the project site at least one month prior to the start of work.
2. The City will approve the final restoration locations and plant species prior to planting.
3. All plant materials must be native species appropriate to the Amon Creek Natural Preserve.
4. Work parties and volunteer activities must be coordinated with City staff to ensure protection of sensitive habitat areas. All volunteers must sign the appropriate City forms.
5. Placement of rocks, barriers, or other deterrents intended to discourage off-trail use must be reviewed and approved by City staff prior to installation.

Tri-City R/C Modelers

Project: Irrigation System Component Repairs

Requested City Funding: \$8,000

Total Project Cost: \$23,185.06

Tri-City R/C Modelers submitted an application to repair and upgrade several components of their irrigation system, including rebuilding irrigation valves and replacing the existing motor control center with a variable frequency drive.

After review, staff determined that the proposed project does not meet the Park Partnership Program guideline requiring that projects provide benefit to the general public. The Tri-City R/C Modelers facility is located within a gated area and is not generally open or accessible to the public.

Because the project does not meet the program eligibility requirements, staff does not recommend funding this application. Staff is working with the organization separately to address the irrigation system issues outside of the Park Partnership Program.

STAFF RECOMMENDATION

Based on staff review of the submitted applications and consistency with the Park Partnership Program guidelines, staff recommends funding the Evergreen Mountain Bike Alliance and Tapteal Greenway applications. The total recommended Park Partnership Program allocation for these two projects is \$4,600.

Staff does not recommend funding the Tri-City R/C Modelers application because the project does not meet program guidelines requiring that funded projects provide benefit to the general public. The Tri-City R/C Modelers facility is located within a gated area and is not generally open or accessible to the public. Staff is working with the organization separately to address the irrigation system issues outside of the Park Partnership Program.

2026 City of Richland Park Partnership Program Guidelines:

1. To be eligible, proposed projects must be located upon City-owned parks, park facilities, recreational properties, or within publicly accessible park land or easements.
2. This program is open to service and civic groups, athletic and sports organizations, private individuals, neighborhood park user groups, and non-profit organizations.
3. Proposed projects should be in conformance with park master plans, as applicable.
4. The proposed project must be an enhancement or renovation project that provides benefit to the general public year-round.
5. The proposed project must be self-contained and shall not require City labor, City materials, or ongoing City maintenance, other than standard upkeep associated with normal wear and tear.
6. Park Partnership Program funding may cover up to one-third of the total eligible project cost. Applicants must provide the remaining project funding through private contributions. Private match contributions may include cash, donated labor, and or donated materials. The Park Partnership Program is authorized under RCW 35.21.278, which permits the City to partner with community service organizations and accept volunteer labor and in-kind contributions, subject to applicable statutory limitations.
 - The value of volunteer labor shall be calculated in accordance with applicable Washington State Department of Labor and Industries requirements, including worker classification, safety standards, and other regulatory requirements, as applicable.
7. Proposed projects must be consistent and complementary with surrounding land uses and neighborhood character, and not create hazards or impact the functionality or usability of the park or facility.

Project Timeline:

Application Due Dates - Applications are due by close of business on **March 2, 2026**. All applicants must schedule and attend a mandatory pre-application zoom meeting before Monday March 2, 2026. Please contact Patty Roe, Administrative Assistant, at proe@richlandwa.gov to schedule a meeting. All meetings will be scheduled between the hours of 8:00 a.m. – 5:00 p.m., unless otherwise agreed upon by both parties.

Project Time Limit:

All selected projects must be completed within one (1) year of execution of the contract. Awards may be rescinded for projects not ready for contracting within thirty (30) days of award.

Project Evaluation:

All applications will be reviewed by the Director of Parks and Public Facilities, or his/her designee, to determine eligibility. Proposed projects, which fall within the program guidelines, will be forwarded to the Parks and Recreation Commission (PRC) for consideration. If selected, applicant will be scheduled to make a mandatory five (5) minute oral presentation during the next available PRC meeting. If approved, the PRC will make a funding recommendation to the Richland City Council.

Projects that align with current Parks and Recreation Commission goals will be given higher consideration to those that do not.

Applicant Responsibility:

All applicants are required to complete the online application (must be filled out completely to be considered) and provide an additional narrative of the proposed project. The narrative must include the following criteria:

1. Overview of the project design and anticipated budget.
2. How the project meets the goals of the program, primary beneficiary of the proposed project, and the object/purpose of the project.
3. Proposed Project Schedule and completion date.
4. Any possible maintenance considerations.
5. Aerial view of project location within the park.
6. Renderings and/or photos of proposed project, if applicable.

Project Completion:

Upon completion of projects, applicants will have the option to submit a finalized written report or make a five (5) minute presentation to the PRC highlighting the completed project. All applicants are responsible to schedule a final inspection of their project and submit all paperwork for reimbursement before contract expiration. Please contact staff to schedule.

Attachments:

The following attachments are required and are to be submitted with this application.

These forms are located on the Parks and Public Facilities website under the [Park Partnership Program](#). Direct links to these forms are provided here for your convenience.

- [Work Plan](#)
- [Match Pledge](#)
- [Budget Plan](#)



2026 Park Partnership Application

City of Richland Park Partnership Program

Submitted On:

Mar 2, 2026, 01:31PM PST

Upload File(S): Work Plan:	2026 Park Partnership Applicant Docs Work Plan.pdf Berm pics and Site Map.pdf Remedy Damage Caused by Incompatible Uses at Amon Creek Natural Preserve.pdf
Upload File(s): Match Pledge:	2026 Park Partnership Applicant Docs Match Pledge.pdf
Upload File(s): Budget Plan:	2026 Park Partnership Applicant Docs Budget Plan.pdf
Name of Park:	Amon Creek Natural Preserve
Project Location Within Park:	generally the north end of ACNP
Brief Description of Project:	<p>The Amon Creek Natural Preserve, a City of Richland park (75 ac), is undergoing an assault by off-road bike and motorcycle users who are ripping up habitat and disturbing neighboring residents and other park users. ACNP was established in 2007-2008 by Tapteal Greenway, City of Richland, Washington Department of Transportation, and Energy Facility Site Evaluation Council as mitigation for habitats lost elsewhere. "Future Use Agreements" were entered into by these entities for the purpose of preserving ACNP habitats in perpetuity. Low-impact recreation is allowed as long as it does not degrade habitat values for which it was established. Creation of rogue trails is inconsistent with these agreements.</p> <p>The overarching project goal is to reinforce the preserve status and function of ACNP by removing and discouraging incompatible uses, restoring damaged habitat, and by fostering an appreciation and understanding of this special area. The primary objectives of the proposed Park Partnership program within the overarching project are to remove jump and berm structures and begin restoration of impacted areas with native plants, generally conducted at the north end of ACNP. Parallel Tapteal Greenway-funded work under the broader project scope (some serving as in-kind) will include removing invasive weeds, restoring with native plants generally at the south end of ACNP, and improving interpretation.</p> <p>PP funding would be used to purchase plants and associated materials needed for the restoration, such as plant cages, jute matting, and large rocks to deter damage. Materials can be purchased with the first 2 months of the project, but plant purchases and planting will necessarily wait until fall and winter, depending on weather. Watering will be on-going after planting until the end of the project and likely beyond. Tapteal Greenway will supply in-kind in the form of volunteer labor for planning, planting, watering, etc. as well as for similar efforts in the broader project scope at ACNP.</p>

	<p>Prior to restoration efforts and as part of the City's responsibility to manage the Preserve, the Greenway has requested to the Parks Director that the city conduct a public workshop to establish official trails and to post city signage on city-owned Preserve land instructing users to remain on established trails. Official trails need to be identified and memorialized in Park and Comprehensive Plans and city websites. In addition, fencing (temporary?) has been requested as a deterrent in an attempt to change harmful behavior and give plantings a chance to survive.</p> <p>Pictures of inappropriate jumps and berms and a map showing approximate work area are found in a pdf attachment under the work plan section.</p> <p>Also attached is a document entitled "Remedy Damage Caused by Incompatible Uses, and Other Proposed Work, at Amon Creek Natural Preserve" which gives a description of the overarching ACNP project work envisioned by Tapteal Greenway, the history of the establishment of ACNP, and a summary of the "Future Use Agreements" agreed to by the City of Richland, Tapteal Greenway, WADOT, and EFSEC.</p>
First Name:	Mike
Last Name:	Lilga
What organization do you represent?	Tapteal Greenway
UBI Number of Organization:	601 638 548
Business Address:	Street Address: P.O. Box 2002 City: Richland State: WA Zip: 99352
Phone Number:	509-942-9050
Email:	president@tapteal.org
Requested amount from the City (maximum amount, \$8,000):	\$1,600
Cash from applicant:	\$1,424
"In-Kind" amount (applicant and other sources):	\$3,340
Cash from other sources:	\$
Total project cost:	6,364
Sign Here	First Name: Mike Last Name: Lilga Email Address: president@tapteal.org



**City of Richland
Parks Partnership Program**

Budget Plan

Budget Description: Please use this space to provide a brief description of the budget for your project.

Income Section (examples: cash on hand, business donations, individual donors, etc.):

Income – Confirmed: List sources of income that are confirmed at the time of application submission. This should include cash on hand that you are contributing to the project.

Income – Anticipated: List sources of income that are anticipated, but no confirmed at the time of application submission. This should include City match amount you are requesting.

Requested City Match Amount: List amount under “Income-Anticipated.”

Item Description:	Income – Confirmed	Income - Anticipated
Requested City Match Amount		
Total:		

Expense Section:

Expense – Cash: List all project expenses that will be paid in cash. The total should equal the combined total of the Income Section.

In-Kind Amount: List the dollar value of any donated goods and services.

City Match Amount: List the portion of the line item that you plan to cover with your City match dollars. This amount should match the “Requested City Match Amount” listed above.

Item Description:	Expense – Cash	In-Kind Amount – Value of Donated Goods & Services	City Match Amount
Total:			

Expense Description: Please use this space to provide any additional information you might feel is necessary.





City of Richland
Parks Partnership Program

Match Pledge / Secured Form

The following individuals, businesses, and organizations have made a commitment to donate the following items to _____ for its "In Kind" match.

(Applicant Name)

Type of Work	Print Name (First and Last)	Address and Zip	Phone Number	Volunteer Hours	Estimated Value	Signature

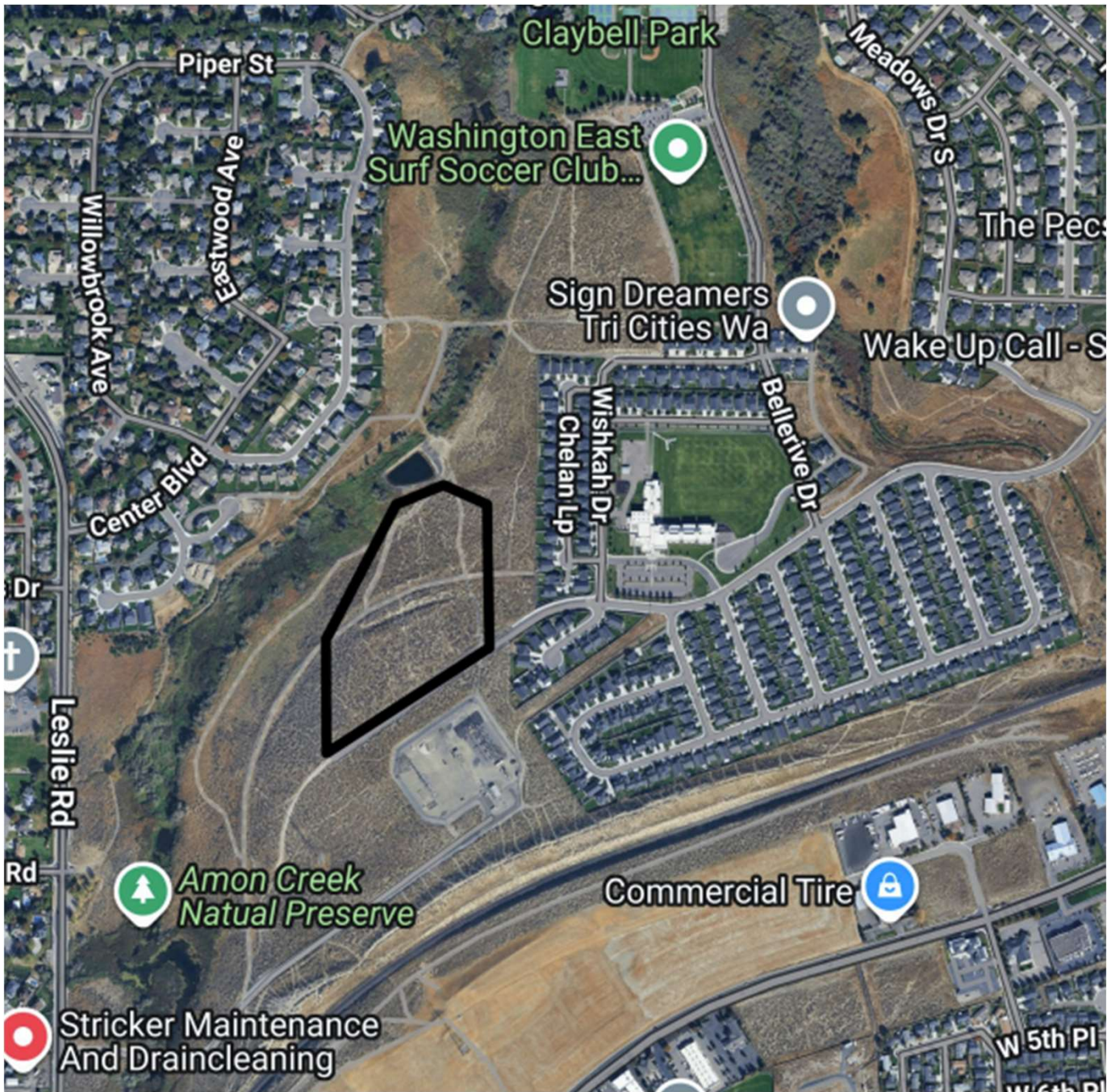


Michael Lilga

Signed at: March 2, 2026 4:22PM America/New_York



Pictures of some of the berm and jump structures to be removed and restored.



Estimated location of inappropriate trails to be removed and restored.

Remedy Damage Caused by Incompatible Uses, and Other Proposed Work, at Amon Creek Natural Preserve

Submitted by Tapteal Greenway

Contact: Mike Lilga, president@tapteal.org or Scott Woodward, scottw@tapteal.org

Goal and Objective:

Tapteal Greenway requests City permission to conduct remediation work on city-owned land in the Amon Basin Natural Preserve (ACNP), in cooperation or partnership with the city.

The Amon Creek Natural Preserve, a City of Richland park (75 ac), is undergoing an assault by off-road bike and motorcycle users who are ripping up habitat and disturbing neighboring residents and other park users. The overarching project goal is to reinforce the preserve status and function by removing and discouraging incompatible uses and by fostering an appreciation and understanding of this special area. The primary near-term objectives are to remove jump and berm structures and begin restoration of impacted areas (see Appendices 1 and 2). Secondary longer-term objectives for ACNP as a whole are to continue Tapteal Greenway restoration efforts by removing invasive weeds (to the extent possible using mechanical means), restoring with native plants, and updating and adding interpretive signage. A simultaneous effort will be carried out on adjacent Tapteal Greenway-owned property (about 12 ac) similarly impacted.

For the primary near-term work, Tapteal volunteers and volunteers coordinated through the Richland Park Ranger will conduct the work. Tapteal will fund plants and replacement educational signage; no city funds are requested for these items at this time. City approvals will be sought for replacement and new signage. City signage is requested on city-owned Preserve land instructing users to remain on established trails. Official trails need to be identified and memorialized in Park and Comprehensive Plans and city websites. Appendix 3 to this document is a map showing trails recommended by Tapteal Greenway to be officially designated.

In addition, if incompatible uses are not banned by existing ordinances, new ordinances are needed. If a public education effort is needed, Parks and Recreation is requested to establish park rules to be published on signage or in brochures, or both. Tapteal Greenway produced a brochure several years ago that could be updated with park rules, etc.

In longer-term future work, additional new educational signage would be added with Tapteal Greenway funds, possible Park Partnership funds, or a mixture of the two.

Tapteal Greenway Background:

The mission of the Tapteal Greenway: Promote conservation, education, and recreation along the lower Yakima River from Bateman Island to Benton City.

The Tapteal Greenway is a 501(c)(3) non-profit organization founded in 1995. The Greenway is a 100% volunteer organization driven by the board of directors and funded solely by member dues, donations, and grants. The Tapteal Greenway employs no staff and has no endowment.

Conservation: Our conservation efforts include land acquisition, vegetation management and native plant restoration projects, and stewardship of existing natural open space parks such as WE Johnson Park, Chamna Natural Preserve, Horn Rapids Park, and Amon Creek Natural Preserve (ACNP) in cooperation with the respective jurisdictions. As just one example, we estimate that over 80 tons of garbage in our 30 years have been removed from Columbia Point, Chamna, Duportail, Horn Rapids Park, Tapteal Trail, and other sites along the Greenway.

Recreation: Recreation in the Tapteal Greenway occurs in the natural open space parks and along the 31-mile corridor along the lower Yakima River extending from Benton City to the mouth of the river at Bateman Island in Richland. Within this corridor is the Tapteal Trail, on land, and the Tapteal Water Trail, on the river. Land trails in the Amon Creek Natural Preserve are also within the Tapteal Greenway.

Education: Our educational efforts reach students of all ages through participation and organization of a variety of events, including school STEM nights, classroom visits, wildflower and birding field trips, and our Wildlands Walk event at ACNP. Tapteal Greenway sponsors the Woodward Scholarship (administered by 3RCF) to encourage and reward applicants in conservation programs at the college level. We also sponsor and participate in the Youth Environmental Education Through Restoration (YEER) Program, which engages middle school students (Ray Reynolds) in area restoration projects.

Amon Creek Natural Preserve Background:

Project Location: The location of this project is at the Amon Creek Natural Preserve in Richland. Amon Creek is the largest tributary of the lower Yakima River. Amon Creek Natural Preserve follows along the west fork of Amon Creek from Leslie Road north to Claybell Park. A trail system runs along each side of the creek, but mostly on the east side, from the south trailhead to Claybell Park. The preserve contains a unique mixture of wetland, riparian, and shrub-steppe habitats. Over 150 bird species have been spotted in the preserve, making it a popular birding location (about 25 species are year-round residents). Mammals include black-tailed jackrabbits, coyote, raccoon, beaver, otter, and mink. Beaver are particularly active in the preserve and have a marked appetite for the cottonwoods trees that have been planted along the creek.

Establishment of ACNP: Tapteal Greenway initiated an effort to conserve the Amon Basin in about 2001 with the formation of the Amon Basin Community Project. Working with the Trust for Public Land, sources of funding were identified along with available parcels of land around 2005. Sixty acres were purchased in early 2007 with funding provided by the Energy Facility Site Evaluation Council (EFSEC), WA Department of Transportation (WDOT), City of Richland, and Tapteal Greenway. This was followed by the purchase of an additional approximately 15 acres one year later. Ownership of these 75 acres was transferred to the City to become Amon Creek Natural Preserve. EFSEC funding was shrub-steppe mitigation for the Energy Northwest facility while the WDOT funding was wetland mitigation for Highway 240 work in the Yakima Delta. Additional lands were protected later by purchase by Tapteal Greenway (4.1 ac) and by donation to Tapteal Greenway by Hayden Homes (8.07 ac) to bring the total of protected lands to about 87 acres.

ACNP was established, therefore, to preserve habitats lost elsewhere. Low-impact recreation is allowed as long as it does not degrade habitat values for which it was established.

Amon Future Use Agreements: "Future Use Agreements" were entered into by and between the Energy Facility Site Evaluation Council ("EFSEC"), the State of Washington acting by and through the Department of Transportation ("DOT"), the Taptal Greenway Association (the "Greenway"), and the City of Richland, for the purpose of preserving in perpetuity land totaling 60.12 acres for Amon Phase I and 15.53 acres for Amon Phase II in the City of Richland known as the Amon Creek property (the "Amon Creek Property").

From the Phase I Future Use Agreement:

WHEREAS, EFSEC, DOT, the Greenway and the City have entered into a Preservation Agreement with The Trust for Public Land (the "Preservation Agreement"), which Preservation Agreement memorializes the understandings and commitment of EFSEC, DOT and the City with respect to the acquisition and preservation of the Amon Creek Property; and

WHEREAS, the Amon Creek Property, in its present state, has significant natural features and provides critical habitat for fish and wildlife and should be managed as a public nature preserve providing opportunity for education, passive recreation, and quiet enjoyment by the public; and

NOW THEREFORE, EFSEC, DOT, the Greenway and the City agree as follows:

1. During its ownership, the City will not make or permit to be made any use of the Amon Creek Property or any part of it, which is inconsistent with the use of the property as a public nature preserve. In particular, the Amon Creek Property shall never be used for residential, commercial or industrial purposes. Public access to all, or a portion of the Amon

And, similarly, from the Amon Phase II Future Use document:

RECITALS

WHEREAS, EFSEC, DOT, the Greenway and the City have entered into a Preservation Agreement (the "Preservation Agreement"), which Preservation Agreement memorializes the understandings and commitment of EFSEC, DOT, the Greenway and the City with respect to the acquisition and preservation of the Amon Creek Phase II Property, and

WHEREAS, the Amon Creek Phase II Property, in its present state, has significant natural features and provides critical habitat for fish and wildlife and should be managed as a public nature preserve providing opportunity for education, passive recreation, and quiet enjoyment by the public, and

NOW, THEREFORE, EFSEC, DOT, the Greenway and the City agree as follows:

1. During its ownership, the City will not make or permit to be made any use of the Amon Creek Phase II Property or any part of it, which is inconsistent with the use of the property as a public nature preserve. In particular, the Amon Creek Phase II Property shall never be used for residential, commercial or industrial purposes. Public access to all or a portion of the Amon Creek Phase II Property will be permitted, subject to reasonable restrictions on time, number and frequency of such access.

The documents make clear the properties are to be used as a nature preserve and for passive recreation. Here is how Britannica defines nature (p)reserve:

nature reserve – an area set aside for the purpose of preserving certain animals, plants, or both. A nature reserve differs from a national park usually in being smaller and having as its sole purpose the protection of nature. (<https://www.britannica.com/science/nature-reserve>)

Here is a typical definition of passive recreation:

A passive recreation area is typically an undeveloped space that emphasizes natural landscapes and minimal human intervention. These areas are often maintained by local parks departments to promote public health, preserve wildlife, and protect the environment. The recreational experience in such areas focuses on enjoying the natural surroundings through non-motorized activities. (<https://legal-resources.uslegalforms.com/p/passive-recreation-area>)

Construction and use of off-trail BMX jumps and berms are inconsistent with the future use agreements and inconsistent with these properties being established as a nature preserve used for passive recreation. The disturbance must be removed and the area rehabilitated to the extent possible. Steps should be taken to discourage future damaging activities.

Work Scope:

Work scope can be organized into three areas of effort to address project objectives: trail work; vegetation management and restoration; and signage. Work could be conducted by TG volunteers, city crews, or a combination of the two. TG performs its volunteer work on a best-effort basis.

Trail Work

- Remove unofficial off-trail paths, jumps, and berms
 - Requires manual earth moving and shaping
- Improve existing trails
 - Clear trails of overgrowth, improve trail surface where needed
- Repair the viewing decks
 - Repair decking as needed, remove surrounding weeds, improve access from trail

Vegetation Management and Restoration

- Restore habitat damaged by illegal bike/motorcycle jumps
 - Replant with larger shrubs, such as sagebrush and rabbitbrush
- Remove trail-side invasive plants such as kochia and tumbleweeds and restore with natives
 - Manual (not chemical) removal of weeds, replant with larger shrubs
- Add protective plant barriers (wire cages) to protect new plantings.
 - Slow down/prevent browsing
- Devise a plan to control the *Phragmites australis* invasive takeover of the West Fork of Amon Creek
 - Work with Wildlands, Inc. or the county weed board to devise a plan and implementation strategy

Signage

- Replace educational signs with updated information and proper identification of plants and animals.
 - Tapteal Greenway with input from partners (such as the Native Plant Society) as needed and with City review.
- Review panels for the gateway kiosks; replace as needed
 - Tapteal Greenway coordinating with City of Richland; The Greenway has the capability to design and install the signs following City review.
- Move the Leslie kiosk to the south trailhead after Center Parkway extension is complete

The proposed work will be conducted by volunteers on a best effort basis. Scheduling depends upon City approvals and availability of needed volunteers. Plantings could occur in late winter or next fall. Removal of jumps and berms is a priority so that additional inappropriate use is not encouraged.

Figures:

Appendix 1. Pictures of some of the berm and jump structures to be removed.

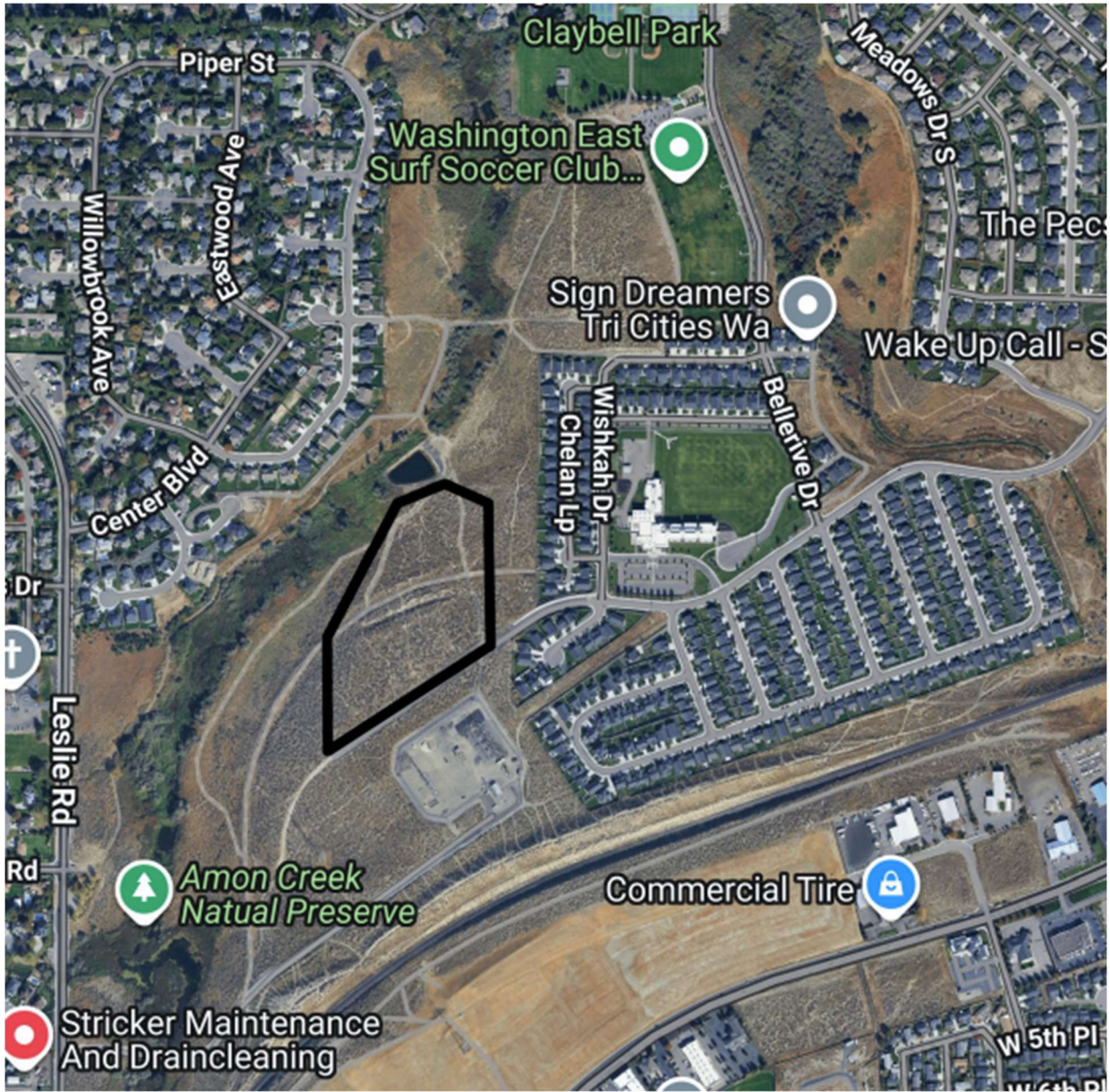
Appendix 2. Estimated locations of inappropriate trails to be removed.

Appendix 3. Suggested official trails for city adoption.

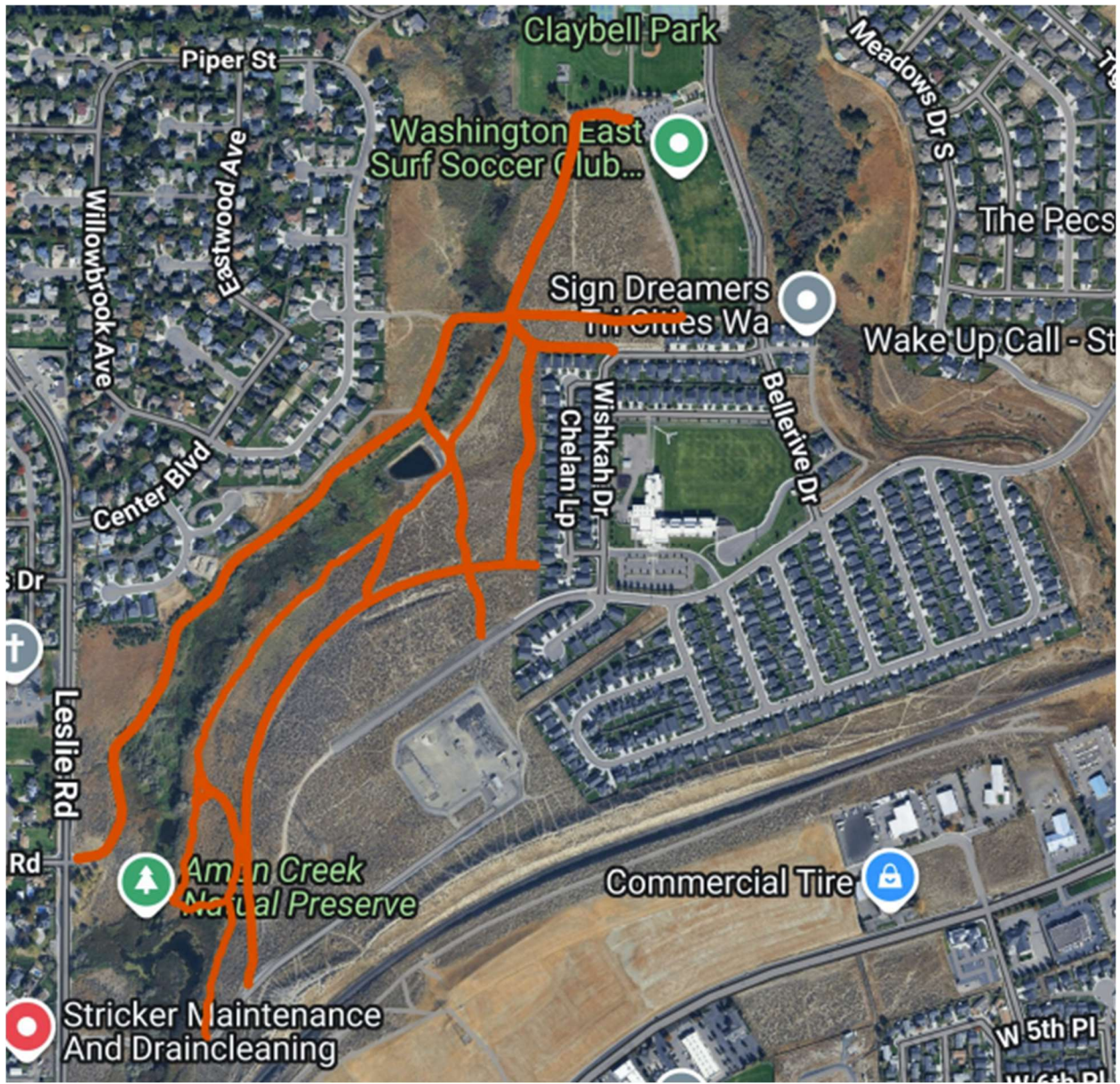
Appendix 1. Pictures of some of the berm and jump structures to be removed.



Appendix 2. Estimated location of inappropriate trails to be removed.



Appendix 3. Suggested official trails for city adoption (GPS data available).





2026 Park Partnership Application

City of Richland Park Partnership Program

Submitted On:

Feb 26, 2026, 10:42PM PST

Upload File(S): Work Plan:	WP march BM bike park 2026 Richland PP grant application work plan.pdf 2026 Richland Parks Partnership Grant (1).pdf Badger Community - Concept .pdf Badger Bike Park Estimate.xlsx - Sheet1.pdf
Upload File(s): Match Pledge:	MPmarch BM bike park 2026 Richland Park Partnership application Match Pledge - 2_26_26, 9_51 PM.pdf
Upload File(s): Budget Plan:	BPmarch BM bike park 2026 Park Partnership Application Budget Plan.pdf
Name of Park:	Badger Mountain Community Park
Project Location Within Park:	Open Space along the eastern boundary
Brief Description of Project:	To complete preliminary and final plans for a family friendly bike park in the Badger Mountain Community Park, including parking and conservation surveys, community input and Public engagement, and planning for and creating a final design.
First Name:	Julie
Last Name:	Nelson
What organization do you represent?	Columbia Basin Chapter Evergreen Mountain Bike Alliance
UBI Number of Organization:	91-1553023
Business Address:	Street Address: 249 Main Ave S, Suite 107-188. City: North Bend State: WA Zip: 98045
Phone Number:	206-524-2900
Email:	julienelson@evergreenmtb.org
Requested amount from the City (maximum amount, \$8,000):	\$3000
Cash from applicant:	\$458.75
"In-Kind" amount (applicant and other sources):	5,830
Cash from other sources:	0
Total project cost:	9,288.75

Sign Here	First Name: Julie Last Name: Nelson Email Address: julienelson@evergreenmtb.org
------------------	---

A handwritten signature in black ink, consisting of several fluid, connected strokes. The signature is positioned in the upper right quadrant of the page.

Signed at: February 27, 2026 1:35AM America/New_York



**City of Richland
Parks Partnership Program**

Budget Plan

Budget Description: Budget for the planning, survey, community engagement and design of a family friendly bike park in the designated open space area of Badger Mountain Community Park.

Income Section (examples: cash on hand, business donations, individual donors, etc.):

Income – Confirmed: List sources of income that are confirmed at the time of application submission. This should include cash on hand that you are contributing to the project.

Income – Anticipated: List sources of income that are anticipated, but not confirmed at the time of application submission. This should include City match amount you are requesting.

Requested City Match Amount: List amount under “Income-Anticipated.”

Item Description: (income Source?)	Income – Confirmed (Donation?)	Income - Anticipated (Match?)
EMBA staff	14	
EMBA CB chapter	458.75	
Requested City Match Amount		2986
Total:	472.25	2986

Expense Section:

Expense – Cash: List all project expenses that will be paid in cash. The total should equal the combined total of the Income Section.

In-Kind Amount: List the dollar value of any donated goods and services.

City Match Amount: List the portion of the line item that you plan to cover with your City match dollars. This amount should match the "Requested City Match Amount" listed above.

Item Description:	Expense – Cash	In-Kind Amount – Value of Donated Goods & Services	City Match Amount
PM, Public Engagement, see match form		2,500	
Planning meetings, drone, parking see match form		3,330	
Preliminary design and final design			3,000
Mileage	108.75		
Survey material	100		
Meeting materials	250		
Total	458.75	5830	3,000

Expense Description: Please use this space to provide any additional information you might feel is necessary. Labor rates used in estimate: General volunteer \$40/hr, Engineering Aide 3 \$70/hr, Project Manager \$100/hr. Labor rates for Engineering Aide 3 from ofm.wa.gov, used midpoint of job class salary and Safe Harbor Rate (1.25) to compute a fully-loaded labor rate and rounded down. For Project Manager, used IT Project Manager job class and Safe Harbor Rate and rounded down \$134.15/hr to \$100/hr. Mileage assumed 15 mi roundtrip and 72.5c/mi.

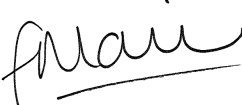




City of Richland
Parks Partnership Program

Match Pledge / Secured Form

The following individuals, businesses, and organizations have made a commitment to donate the following items to _____ Evergreen Mountain Bike Alliance, Columbia Basin Chapter ___ for its "In Kind" match.

Type of Work	Print Name (First and Last)	Address and Zip	Phone Number	Volunteer Hours	Estimated Value	Signature
Project manager, public engagement, project oversight and quality control	Francesca Maier	2146 Hudson Ave, Richland WA 99354	443-208-8386	25	2500	
Planning, meetings with CoR, preparation, drone operation, parking analysis, native plant delineation, public engagement and design needs	EMBA Volunteers	249 Main Ave S, Suite 107-188. North Bend WA 98045	206-524-2900 509-627-9754	64	3330	



www.richlandparksandrec.com Scan the QR to Upload Printed Documents Use as Many Pages as Necessary



**City of Richland
Parks Partnership Program**

Work Plan

Steps (Chronological)	Responsible Party	Completion Date
Preliminary design		
Parking survey during periods of peak use to determine parking capacity	EMBA volunteers	4/30/2026
Generate estimates of the parking needs for the bike park	EMBA volunteers	5/15/2026
Terrain mapping and identification of native plants to preserve within the design	EMBA volunteers/Conservation group	5/15/2026
Concept design	EMBA staff	6/5/2026
Develop renderings	EMBA staff	6/15/2026
Public Engagement		
Create a facilitation plan for an in-person public meeting	EMBA Project Manager	7/10/2026
Prepare questions for an online survey to capture community feedback	EMBA volunteers	7/10/2026
Develop a presentation for the in-person public meeting	EMBA volunteers	7/10/2026
Develop presentation boards with renderings for the in-person public meeting	EMBA volunteers	7/10/2026
Meet with the City of Richland to prepare for the public meeting	EMBA/CoR	7/20/2026

In partnership with the City of Richland, facilitate a public meeting	EMBA/CoR	7/24/2026
Collect and analyze public input using an online survey and other in-person facilitation tools (sticky notes, feedback forms, etc.)	EMBA Project Manager	7/31/2026
Final Design		
Debrief with the City of Richland to agree design modifications to address community concerns	EMBA staff and EMBA volunteers, CoR	8/7/2026
Incorporate City of Richland comments into a final design of the bike park, including construction phasing	EMBA staff	8/14/2026
Develop a bill of materials and cost estimate (including categorized labor hours)	EMBA staff	9/4/2026
Submit the final design to the City of Richland for approval	EMBA volunteers	9/11/2026
Present the final design to the Parks and Recreation Commission	EMBA volunteers, CoR	9/24/2026
Project Management	EMBA Project Manager	9/24/2026



Richland Parks Partnership Program Application
Columbia Basin Chapter, Evergreen Mountain Bike Alliance
February 2026

The TriCities region is the third largest region in the State of Washington, but it has no dedicated mountain bike facilities. As a result, TriCitians who participate in the sport of mountain biking frequently travel out of town to places like Post Canyon (near Hood River, OR) or across the state to participate in the sport. The City of Richland has soft surface trails within public parks like Chamna Natural Preserve, WE Johnson Park, Badger Mountain, and the Amon Basin Preserve, but these trails are shared with hikers and equestrians. This leads to frequent conflicts between bikers, hikers, and equestrians.

Our project proposes the design of a mountain bike park within the open space along the eastern boundary of Badger Mountain Community Park. Mountain bike trails are a compatible use with open space, as they are minimally invasive soft surface trails. The mountain bike park would provide dedicated trails for biking and help to address illegal trail building and reduce conflicts between trail user groups. An added benefit of placing a mountain bike park within the city limits is that it would provide a facility where Evergreen Mountain Bike Alliance (EMBA) Columbia Basin chapter is able to provide classes to expand the sport.

Badger Mountain Community Park is an ideal location for the bike park for several reasons:

- **Connectivity:** the park is connected to neighborhoods via the Keene Road trail, expanding independent access to the park to teens from neighborhoods as far afield as north Richland (via the Sacajawea Heritage Trail), Pasco, and West Richland.
- **Complimentary Amenities:** The park and near-by shopping center provide many complimentary amenities including parking, restrooms, water fountains, and alternate activities.
- **Terrain:** The open space we have identified has ideal terrain to support a bike park with a mix of features that enable skill progression and support mixed skill levels.
- **Conservation Potential:** The open space has many stands of native plants like sagebrush and rabbitbrush, but has evidence of dumping and wind-blown

trash. These issues can be ameliorated by regular community use and routine maintenance by EMBA Columbia Basin Chapter.

Our project proposal is for the development of a buildable design with a bill of materials and cost estimate, to support construction of the bike park in the fall of 2026 and spring of 2027. Our project includes a public engagement process during design development, where neighborhood concerns can be identified and addressed within the design. The project has the following phases:

Preliminary Design

Capture information and refine the concept map into a preliminary design to produce public engagement materials. Activities include a parking survey and estimates of the parking needs, terrain mapping, coordinating with local conservation groups (e.g., Audubon Society, Native Plant Society) to identify areas with high quality native plants, concept design, drone video, and renderings.

Public Engagement

Prepare for, help facilitate, and debrief a public meeting in partnership with the City of Richland Parks Department. Activities include: Planning and implementing an in-person public meeting, preparing an online survey, meeting with the City of Richland to prepare, revise and facilitate a public meeting and collecting and analyzing public input.

Final Design

Incorporate feedback from the public engagement process into a final design, bill of materials, and estimate. Activities include: Debriefing with the City of Richland, creating a draft final design, developing a cost estimate and presenting the final design to the Parks and Recreation Commission.

Project Management

Francesca Maier is an experienced project manager who will manage the project. This includes assigning volunteers, coordinating tasks, managing the schedule and budget, coordinating with the City of Richland, and coordinating with EMBA regarding the design. We have estimated 1 hour per week for project management activities.

Badger Community Park - 20% Concept






- Badger Open Space
- XC Trail
- Jump Zone
- Drop Zone
- Pump Track
- Contours 2ft

Audit trail

Details

FILE NAME	MPmarch BM bike park 2026 Richland Park Partnership application Match Pledge - 2/26/26, 9:51 PM
STATUS	● Signed
STATUS TIMESTAMP	2026/02/27 05:53:05 UTC

Activity

 SENT	julienelson@evergreenmtb.org sent a signature request to: <ul style="list-style-type: none">Julie Nelson (julienelson@evergreenmtb.org)	2026/02/27 05:51:49 UTC
 SIGNED	Signed by Julie Nelson (julienelson@evergreenmtb.org)	2026/02/27 05:53:05 UTC
 COMPLETED	This document has been signed by all signers and is complete	2026/02/27 05:53:05 UTC

The email address indicated above for each signer may be associated with a Google account, and may either be the primary email address or secondary email address associated with that account.



2026 Park Partnership Application

City of Richland Park Partnership Program

Submitted On:

Feb 28, 2026, 08:41PM PST

Upload File(S): Work Plan:	2026 Park Partnership Applicant Docs Work Plan.pdf Grant narrative.pdf
Upload File(s): Match Pledge:	2026 Park Partnership Applicant Docs Match Pledge.pdf
Upload File(s): Budget Plan:	2026 Park Partnership Applicant Docs Budget Plan.pdf
Name of Park:	Tri-City R/C Modelers
Project Location Within Park:	HRMC pump house and TCRCM valve pit
Brief Description of Project:	Rebuild 4" Cal-Val valve. Rebuild two 4" Fresno valves. Replace our failing/problematic MCC (motor control center) with a modern VFD (variable frequency drive), which will resolve multiple existing issues with our current system.
First Name:	Dave
Last Name:	Holland
What organization do you represent?	Tri-City R/C Modelers (TCRCM)
UBI Number of Organization:	601810080
Business Address:	Street Address: 16 S Bent Rd City: Kennewick State: WA Zip: 99338
Phone Number:	509-627-8354
Email:	planecrazyrc@icloud.com
Requested amount from the City (maximum amount, \$8,000):	\$8,000
Cash from applicant:	\$11,500
"In-Kind" amount (applicant and other sources):	\$8,754.92
Cash from other sources:	\$4,000
Total project cost:	\$23,185.06

Sign Here	First Name: David Last Name: Holland Email Address: planecrazyrc@icloud.com
------------------	---

David Holland

Signed at: February 28, 2026 11:02PM America/New_York



City of Richland
Parks Partnership Program

Match Pledge / Secured Form

The following individuals, businesses, and organizations have made a commitment to donate the following items to _____ for its "In Kind" match.

(Applicant Name)

Type of Work	Print Name (First and Last)	Address and Zip	Phone Number	Volunteer Hours	Estimated Value	Signature





City of Richland Parks Partnership Program

Budget Plan

Budget Description: Please use this space to provide a brief description of the budget for your project.

Income Section (examples: cash on hand, business donations, individual donors, etc.):

Income – Confirmed: List sources of income that are confirmed at the time of application submission. This should include cash on hand that you are contributing to the project.

Income – Anticipated: List sources of income that are anticipated, but no confirmed at the time of application submission. This should include City match amount you are requesting.

Requested City Match Amount: List amount under “Income-Anticipated.”

Item Description:	Income – Confirmed	Income - Anticipated
Requested City Match Amount		
Total:		

Expense Section:

Expense – Cash: List all project expenses that will be paid in cash. The total should equal the combined total of the Income Section.

In-Kind Amount: List the dollar value of any donated goods and services.

City Match Amount: List the portion of the line item that you plan to cover with your City match dollars. This amount should match the “Requested City Match Amount” listed above.

Item Description:	Expense – Cash	In-Kind Amount – Value of Donated Goods & Services	City Match Amount
Total:			

Expense Description: Please use this space to provide any additional information you might feel is necessary.



The Tri-City R/C models club (TCRCM) is planning to upgrade and repair three major components on our irrigation system. Due to the age of our system components (over 30 years) and potential added expense of not addressing these issues, we feel it's imperative that we address them ASAP.

1. We will start with our Cla-Val irrigation discharge valve (right next to the pump), which is in dire need of rebuilding and currently has leaks and has been experiencing other control problems. We will bring a contractor in to have that work done. Estimated MINIMUM cost is right around \$4400 and could be up to double that cost, depending on what components may need to be replaced beyond the normal rebuild cost. As this component is in the worst condition, we would like to have it done early in the irrigation season, prior to the end of May, if possible. This item is within the ORV park boundary inside a pump house and access will be coordinated with HRMC personnel.



- The second item that needs to be addressed is our two 4 inch solenoid controlled irrigation Fresno valves at our field, that have had recent issues. The valves have been intermittently sticking open and at a minimum need new solenoid valves to address the issues. This work will be performed by TCRCM members. Expected completion date is either the same time or immediately after the Cla-Val valve is rebuilt. If afterwards, then expected completion is by the end of June. Rebuild parts cost is expected to be \$300-600.



- The third and final item of concern is our pump MCC (motor control center), which just last year experienced a major issue. It is located in the pump house near the Cla-Val valve. Our MCC has a design flaw, which in order to keep the system operational, we had to deactivate its automatic reset functionality. Now, any trip of the MCC permissive logic will keep the pump from energizing when receiving a command

from our sprinkler controller, until manually reset. Unless the indicator lights are checked daily (by HRMC personnel), the TCRCM membership has no idea the pump isn't energizing until we notice the grass under stress/dying. Our system is set to run in the early AM hours (with no-one to observe operation) to coordinate (share) with ORV park (HRMC) irrigation water usage. When the pump does energize it instantly comes to full speed which is hard on the aging system/piping and has a higher demand for electricity (surge current). Also, any air in the system lines can potentially damage lines and junctions due to water hammer. We observe large amounts of air discharging from the water canons each time the system starts and we have been told the system has had line ruptures in the past. Due to the sand base of our grass field, any system downtime due to system failures has and will lead to major damage/setbacks in the grass. If the system is down long enough, then our grass would have to be replaced, which would be a major expense/setback for our club.

To address these concerns, TCRCM is endeavoring to replace the MCC with a VFD (Yaskawa 58Amp variable frequency drive). A modern state of the art VFD will address all of these issues/concerns. It can be set/programmed to pre-charge the lines (purge air) by ramping up slowly, which is also less of a surge electrically. It will also have more built in safety features to reduce/minimize having piping and pump issues. It will also address the tripping and pump run permissive problem.

Current estimated cost is just over \$14,000 after taxes and will be installed by an irrigation/electrical contractor.

The quality of the TCRCM grass is a focal point for all visitors and club members from the local community. By rebuilding/repairing/replacing critical irrigation components, we aim to keep and improve the quality of our field. Yes, we are a gated facility but endeavor to include the local community in all of our events by advertising through local media avenues. We have been

showcased often by a local TV station advertising our events. We also publish our event schedule on our website (www.tcrbcm.com) and hold specific events for the public at large to come and try their hand at R/C flying. In years past and this year, we have/are hosting ARC of the Tri-Cities events. We advertise our facility through the local hobby shop and currently have a “Free RC Pilot Lessons” poster in their window next to the entry door. We are definitely open to the public joining us but due to our Richland City lease insurance requirements, at a minimum, verified insured TCRCM members must be present at the field for all flying activities. We are constantly striving to notify/include the community in our activities. We are also currently working on partnering with “Aviation First Steps”, which is a STEM based organization, to introduce youth to model aviation. R/C aviation is a great STEM based activity!

Not many communities have such a unique opportunity (and a well groomed facility) right in their immediate location. As such, we have people from outside of our local community and state, in our membership and many others in the hobby attending our events from out of town, which helps with tourism income. We are excited to bring more of the community into the opportunities available through model aviation and appreciate the assistance that Richland City has provided to help our recreation avenue grow.

Thank you for your consideration.

Dave Holland
TCRCM Vice President